

Merry Christmas to All! And Farewell Kim

December 2011



It's the end of a great year in the TACH office, and it is with definite sadness we bring the year to a close with Kim Lethbridge our much loved Development Officer leaving TACH. Please take the time to read Kim's farewell article (page 12) to the network and our broader TACH "community". I

think Pam, who has worked with Kim the longest at TACH summed our feelings up here at TACH better than I ever could.

"Kim's ability to talk and listen to others has proven to be her most valuable asset. As you know when you ring the TACH Office she has always found time to ask of people's welfare, have a laugh and help when she can.

She thinks of everyone with a good heart and likes to see people happy, particularly with the TACH Conference where everything has to be the best for our members and their comfort.

She has always had a secret ambition and obviously feels now is the right time for that to come to fruition. She is a young lady with many talents and it would be a pity for her not to make the most of any opportunities that come along.

Kim, on behalf of your "Team" we wish you all the success in the world, we will miss your smiling face and cheery hellos but you go with our love and affection and good wishes for your future whatever it turns out to be."

Kim we can't thank you enough for everything you've done for Neighbourhood Houses and TACH for the last 20 years. YOU WILL BE MISSED.

However, in saying good bye to Kim, we'd also like to introduce the new TACH Development Officer, Liz

Crane!

Liz has been working for the last four and a half years at the Tailem Bend Community Centre, a rural area an hour and a half south of Adelaide. She has also served on the board of Community Centres SA, TACH's sister organisation in Adelaide. It will be great for Liz to bring her perspective as a recent coordinator to TACH and the learnings from the work of Community Centres SA and how the Neighbourhood House peak body in SA relates & supports its Member Houses.

Liz comes highly recommended by our colleagues in South Australia. She will start working with us the week of the 23rd January and I'm hoping that she can meet Houses and stakeholders early in the New Year.

However, I'll let Liz introduce herself below...

I'd like to just take the chance to thank all our Member Houses for their unceasing efforts to strengthen their communities. Many of our communities have had an extremely tough year and Houses have been doing all they can to bring their local communities together to support each other through economic downturn, to recover from critical incidents in their community, or to just make their community an even better place to live.

Thanks to all the TACH staff and Board for all the work throughout 2011. We've achieved a lot as a network in 2011 through us working together across the state, across regions and across communities. Together we are stronger. So to everyone – committee members, volunteers and staff thanks for all you do. Have a great Christmas and a very happy New Year.

John Hooper—EO

Hi Everyone,

My name is Liz Crane and I am Mum to 3 year old Lewis and wife to Matt. My family and I are very excited to return to our home in Tasmania after 7 years living and working in South Australia.

For 4 ½ of those years I have been the Coordinator of the Tailem Bend Community Centre and from this position I have gained an immense passion and respect for Community Centres and all that they stand for.

I am extremely excited to be joining the TACH team, and look forward to continuing my dedication to this sector. I can't wait to get stuck in and check out all the Community Houses in TAS and working with you all.

Merry Christmas and a Happy New Year



TACH Business



Tasmanian Association of Community Houses Inc

PO Box 169
MOONAH TAS 7009

Phone: (03) 6228 6515
Fax: (03) 6228 6585

Email: tach@tach.asn.au
Website: <http://www.tach.asn.au>

ABN: 95 897 499 497



Tasmanian Association
of Community Houses is
a proud partner of the
Tasmania Together
Progress Board.

Tasmanian Association
of Community Houses
gratefully acknowledges
the support of the
Tasmanian Government
through the Department
of Health & Human
Services.



Executive Officer

John Hooper

Finance Officer

Pam Bridgen

Development Officer

Kim Lethbridge

Development and Project Asst.

Leah Brightman

Get Healthy Project

Ron Sutton

Eating with Friends Coordinator

Karen Austen

Original Newsletter Layout

Monissa Whiteley

TACH held its annual State Conference in September 2011 at Inveresk in Launceston which was a great success, and I'd like to thank Kim Lethbridge, the rest of the team here at TACH, and Northern Suburbs, Ravenswood, Tresca and Dorset Houses/Centres particularly for their support in the lead up and during the conference. Please see Kim's summary of conference on page 4.

Annual General Meeting

At the conference we, as usual, held our AGM where we said farewell to great servants of the TACH Board Rod Crass, Vicki Knight and Elisa Ryan and welcomed three new Board members – Michelle Anderson (Nth), Therese Page (Nth) and Eddie Rodgers (Sth). All three are volunteer management committee members at their local House and their perspectives about what TACH can do to assist committees will be very welcome.

The TACH Board for 2010/2011 is: Simon Paul (President), Kate Beer (Vice Pres & Public Officer), Rachael Morris (Secretary), Leanne Doherty (Treasurer), Michelle Anderson, Suzi Edwards, Therese Page, Jo-Ann Ring, Eddie Rodgers, and Eleanor Taylor.

In the meeting we also tabled the TACH annual report containing our audited financial statements and our report on the work of TACH in 2010/2011. If anyone is interested it, and the previous year's report, can be found on the TACH website at <http://tach.asn.au/what-is-tach/what-is-tach/tach-annual-reports/>

TACH Board Retreat and Planning

In early November the new TACH Board met for a day and a half, working through a very full agenda. We held an induction session for Board Members; received a training session from Malcolm McDonald on Risk Management and a general Q & A on governance; TACH staff reported against the strategic plan on our work this year, and then we reviewed our 3 year Strategic Plan and identified some key priorities for 2012 which is the final year of our current plan. The Board also reviewed the PD for the Development Officer position and settled on a recruitment process, as well as holding its first official committee meeting. There was also time (somewhere) for getting to know each other over a meal or two, and some mini golf! At this point I should point out that our EO defeated Kate Beer our VP on a count back – sorry Kate John asked for me to mention that!

Key priorities identified for 2012 included:

- *Finalise and distribute TACH Management Committee manual & resources*
- *Prioritise pursuing partnerships, resources and opportunities to offer training in financial, community development, and other workforce development pathways for House staff*
- *Continue to encourage joint branding, as well as develop & implement collective promotion strategies*
- *Develop mechanisms to effectively collect feedback of Members analysis of community needs, trend and issues and communicate these effectively to policy makers*
- *Implement risk management processes into TACH governance, as well as develop and introduce simple, structured decision filters into Board processes*
- *Revise all TACH policies and procedures over the next year.*



TACH Business

PPP + training opportunity

In 2011 we were successful in our application for 39 PPP training places for staff from Neighbourhood Houses across Tasmania, which will fund 90% of the cost. This training delivered through our RTO partners – Skills Institute and Work & Training—has been rolled out. However now TACH, in conjunction with Houses and The Skills Institute, is preparing an application for the most recent Productivity Places Program round (PPP+).

Productivity Places Program provides training opportunities as a "joint Commonwealth/State funded program aiming to substantially increase the number of workers with higher qualifications and reduce the number without qualifications." This round not only subsidises full qualifications, it gives the opportunity to apply for partial qualifications. This could include units relating to First Aid, OH & S, Aggression/De-escalation, MYOB, Food Safety – all areas Houses have asked TACH to source subsidised training for their staff and communities in the past.

Leah and Kim have been seeking expressions of interest from House volunteers and staff, to feed back into the application early in the New Year. If you are interested and didn't see the Expression of Interest form please contact the TACH office and we can send it to you.

ANHCA and Neighbourhood House Week

ANHCA, Australian Neighbourhood Houses and Centres Association, is our national Neighbourhood House peak body and in November we held our annual face to face meeting in Sydney.

We decided it's time to make better use of social media, particularly Facebook, by aiming to use it as a means to link and promote Houses and Centres across Australia.

Accordingly the national theme for Neighbourhood Week is **"I LIKE Neighbourhood Houses and Centres"**.

We are asking each Neighbourhood House to create a Facebook Page for their centre (not a profile) and then proceed to LIKE each other and the newly developed "I Like Neighbourhood Houses and Centres" page. This is the Facebook portal for Neighbourhood House Week, but more importantly this is the Facebook page which will enable the 1000 community and neighbourhood houses and centres across the country to network, share information and recognise each other's achievements. Be part of the network by liking us here <http://www.facebook.com/NeighbourhoodCentreWeek>

Community Centres SA have created a great resource to guide Houses through establishing a Facebook presence as well as policies and procedures to guide its management and use. TACH will make this available on our website and distribute electronically to our Members in the New Year.

National Survey 2011 – ANHCA has just distributed via Survey Monkey our second annual national survey of Neighbourhood Houses. I encourage all Houses to complete it by early in the New Year. For those interested last years national report can be found on the TACH website.

Wrapping up: On behalf of the Board I'd like to congratulate everyone on a very productive year for Houses and TACH. We showed this year what we can all achieve when we work together as a network and I look forward to seeing where 2012 takes TACH and our network.

Simon Paul– President

If any Management Committee Members wish to receive the TACH E- News please contact the TACH office with your email details.

This is one simple way you can be more informed of the work happening at a state-wide level.



The TACH Board at the recent TACH Board Retreat held at the Tamar Valley Resort.



TACH Conference 2011—Beyond Our Comfort Zone

The Tramsheds Function Centre in Inveresk was the venue and the Northern Region of Neighbourhood Houses played host to this year's TACH Conference, which was held over three days from 28th to the 30th September.

This year's theme, "Beyond Our Comfort Zone" enabled us to explore what it takes to step out of your comfort zone by delving into some of the issues and areas which make us feel a little or a lot out of our depth. It was a great opportunity to also look at how Houses are developing some amazing, innovative and highly effective programs targeting groups which have traditionally been more difficult to reach. It also enabled us to look at individual stories of people who stepped out of their comfort zone to attend a Neighbourhood House programme and how it changed their lives.

The Conference was opened with a bang...literally...as we were joined by the Ravenswood Heights Primary School Taiko Drumming Group supported by the Launceston PCYC Show Taiks. This extremely talented group of young people with leadership from PCYC worker, Mark Brown, wowed our delegates with their first public appearance as a group.

Over the three days we were very fortunate to welcome expert workshop facilitators and presenters from a large number of local organisations, who delved into subjects such as working with new arrivals, support for problem gamblers, ensuring our organisations are disability friendly, humour for a healthy community and embedding literacy in our programmes along with a workshop about Industrial Awards with Keith from Jobs Australia. There was also a fun hands on workshop exploring the activities that happen at the Rocherlea Peace Garden. For those brave delegates wanting to try their hand at juggling and unicycles, there was even a circus workshop. Steve Colwell from Interweave Arts also facilitated a fun arts project which encouraged people



into others personal space, causing a fair bit of giggling and laughter.

A new concept trialled at this Conference and which looks like becoming a firm fixture, was the Nano Talks session. This "World Café" style session gave twelve separate groups the opportunity to give a mini presentation about their projects and programmes to three groups of participants along with time for discussion and questions. This was a very popular session which enabled sharing about some of the fantastic projects already happening around the Houses.

Rodney Croome spoke at the Plenary and gave a workshop on *Advocating for Issues*. Rodney spoke very personally about his own journey advocating for gay and lesbian rights in Tasmania. Rodney shared openly about the impacts of Tasmania's former discriminatory laws against homosexuality, including the distressing impact of their enforcement on his own and others' lives. He expanded on these deeply personal campaigns to illustrate how to advocate for your community in a clear way as well as tips and tricks in using the media to get your message across. The feedback on Rodney's sessions showed this was one of the top three highlights of conference.

Merial Clark, the inaugural Executive Officer for the Australian Neighbourhood Houses and Centres Association (ANHCA) compared the data from the 2011 survey on Neighbourhood Houses nation-wide to Tasmania's data, and talked about the expanding role of ANHCA advocating for Neighbourhood Houses nationally. She also encouraged Houses to use the "heart house" symbol in their branding and promotion. This symbol is being taken up more and more as a unifying symbol by Neighbourhood Houses across Australia.

One of the sessions for which we received the most positive feedback was "Inspiring Tasmanians". Tony Reidy from TasCOSS hosted this "on the couch" session which provided the opportunity for some of our House Members to share their own personal stories of success and development through the Neighbourhood House programme. Some audience members were moved to tears by the honest and heartfelt stories of people who have overcome personal difficulties, trauma and hardship, gained confidence and support through our programmes and gone on to achieve personal success on many levels. This was a wonderful testament to the work that we, as Houses, are involved in every day - supporting people in our communities to change their lives.

A Conference highlight was our wonderful guest, Keynote Speaker, Maggie Dent.

Maggie is a specialist on the topic of the resilience of children and communities. What she spoke about



TACH Conference 2011—Beyond Our Comfort Zone

really hit a chord with our Conference Delegates who often deal with traumatic events within their communities. Maggie emphasised the importance of self care and being aware of the effects of external events on an individual working in the community. Her workshop was presented in a really practical, down to earth style and she tackled a very serious topic in a clear and humourous way that everyone could relate to.

Maggie's second workshop explored the "10 Building Blocks for Resilient Children" and how to prepare kids for life in a challenging world. She presented many practical hints for helping children embrace life and enhance their natural curiosity as they grow. TACH is grateful for the support of the Tasmanian Early Years Foundation for their support, enabling us to bring Maggie to Tasmania for our Conference. That support also enabled us to present a post Conference workshop with Maggie, which was attended by over 110 people from early years organisations from right around the State.

As usual, we had the opportunity to relax and let our hair down at some fun social events, which included a casual evening and also a circus themed Conference Dinner. Nolan Fox and friends provided some fabulous circus entertainment at the Dinner, complete with fire twirlers. It was also great to see so many people dress up in their circus finery for the Dinner—there was a room full of fabulous clowns, ringmasters, fortune tellers and a certain trapeze artist who looked suspiciously like a cross between Cher and our own John Hooper!

There are many people to thank without whom our Conference wouldn't be possible:

- The Northern Region of Neighbourhood Houses, particularly Denise Delphin (Northern Suburbs Community Centre), Vicki Knight (Dorset Community House), Rhonda Legg (Tresca Community Centre) and Nettie Burr (Ravenswood Neighbourhood House), who worked really hard to bring you such a great Conference.
- Our sponsors, The Early Years Foundation, NILS Network of Tasmania, InRoads and the Tasmanian Government, through the Community Support Levy grants program, who provided generous support towards the provision of our speakers and catering. Also the local businesses and organisations who provided goodies for our Conference Bags.
- Thank you to the thirty plus organisations who came along to our Conference Expo. Expo has been the start of many positive partnerships between Houses and organisations over the years and the sharing of your time and information is always very much appreciated.



- The staff at the Tramsheds, who worked very hard to keep us all fed and comfortable over the three days, but were also fantastic to work with during the planning process for Conference.
- Everyone who assisted by helping out with volunteer roles before and after Conference, the rest of the TACH team who work hard for months to bring you three days of action packed learning and fun opportunities, but most importantly, to the 170 plus delegates who came willing to share their knowledge, expertise and friendship with the network.

The North West Region are looking forward to hosting Conference in 2012. Watch this space for more information.

Kim —Development Officer



Gambling problems? Ask Jack about Gamblers Help

Poker machines took more than \$215 million in losses out of the pockets of Tasmanians last year, and research shows that most came from areas of socio-economic disadvantage. The bottom line with problem gambling is that it costs the most for those who can least afford to pay.

Commercial gambling isn't just big business, it's huge. Picking up the pieces arising from its problems is also daily business for Neighbourhood Houses.

The level of concern and interest was expressed as 23 participants from 12 houses and three organisations around Tasmania participated in an interactive workshop by Gamblers Help at the Tasmanian Association of Community Houses (TACH) state conference.

Gamblers Help counsellors spoke about the common experience and pathways that repeatedly resulted in many being trapped into a cycle of financial, emotional and relationship issues that often surround gambling problems. With the ripple effect from any one person's problems affecting between 5—10 others, houses were keen to learn how to break the ice around what is often an unnecessarily shame-ridden issue. Many houses reported 'just-below-the-surface' anecdotes; tales of encountering family after family in similar situations struggling against a gambling problem and its consequences, but not knowing what to do.

One take-home message was that breaking the silence could be the first step towards resolving the issues, where as keeping a blind eye out of fear of not knowing what to say would likely leave the problems to grow. Other strategies included houses displaying information about where to access Gamblers Help services, developing gambling policies or growing programs that addressed some of the factors, such as social isolation and inclusion, which can contribute to people seeking gambling as an escape. Good news is, this is already what many houses are doing by seeking to include, connect and up-skill members of the community in programs and projects.

Several of the houses participating in the workshop requested a follow up with Gamblers Help educators, who are available year-round to run workshops or provide ideas around tackling gambling problems. Gamblers Help educators can assist in providing material and knowledge about what could work in your region, phone Anglicare on

1800 243 232 to be connected with your local worker.

Ask Jack

Jack is the face of the DHHS 'Know

Your Odds' gambling education campaign. All year Jack has been giving Tasmanians information about the realities of gambling. He's explained the house edge (the maths behind the odds that keep the games in front) as well as the risks of playing online poker or casinos (which are mostly off-shore and unregulated). Jack has a blog where people can ask questions about gambling - and now he's also on Facebook.

Response from the community has been excellent with most people surveyed recognising Jack and understanding his messages.

TACH Executive Officer John Hooper invited Neighbourhood Houses to become actively involved in accessing the Know Your Odds campaign material online, either at the blog of Facebook.

"We've had a great positive response to Jack for the honest and fact-based information he gives on gambling. Now on Facebook people can more easily connect and 'Ask Jack' more questions about how gambling works, how to recognise a problem and where to get support."

"Neighbourhood Houses are the heartbeat of the



Gamblers Help

24 HOUR FREE CALL
1800 858 858
gamblinghelponline.org.au

KNOW YOUR ODDS
www.knowyouodds.net.au

THE LONGER YOU PLAY THE MORE YOU LOSE.

Like Us On **facebook**

(Continued on page 7)



Tasmania Together—It's all in the report

It's all in the report: *What the Community Said*

The cost of living, mental health issues, anti-social behaviour, poor planning and lack of infrastructure, access to health services and professionals, youth suicide and teenage pregnancies, and climate change, are just some of the key concerns of the Tasmanian community.

The views of Tasmanians are contained in a report titled *What the Community Said*. The report was released on 3 August by the Tasmania *Together* Progress Board and summarises the key findings from major community consultations undertaken as part of the 10 Year Review of Tasmania *Together*.

Community priorities have changed in the five years since the last review of Tasmania *Together* – the State's 20 year plan.

Tasmanians are experiencing financial strain from rising costs associated with everyday essentials such as food, transport, electricity and water. But other priorities have emerged over the last five years. Understanding, and dealing with mental health is now more widespread and there is considerable worry in the community about anti-social behaviour such as street violence, abuse and harassment.

Tasmanians are concerned about the lack of adequate infrastructure for transport and energy use, and long term planning. There is heightened community awareness of the need to deal with difficult issues confronting young Tasmanians such as homelessness, teenage pregnancy and youth suicide.

All these priorities present a challenge for the Progress Board to make sure they are reflected as much as possible in a new Tasmania *Together* plan for 2020.

What next... the Progress Board will now refine and develop the goals and benchmarks in Tasmania *Together* based on the feedback received. Advice will be sought from the ABS, independent experts, Government departments and community organisations to ensure the best measures and data are found to reflect community priorities.

The Board plans to make recommendations on changes to Tasmania *Together* to Parliament later this year.

Find out what's in the report... Check out the following documents:

What the Community Said – Outcomes from the consultation phase of the 10 Year Review of Tasmania *Together*
Available from the Tasmanian *Together* website www.tasmaniatogether.tas.gov.au/10_year_review/

For further information or a copy of *What the Community Said*, contact the Progress Board on 6232 7010.

Gambling problems? Ask Jack about Gamblers Help (continued)

community, and this information would be good to get into the bloodstream.”

“This prevention campaign aims to stop gambling problems from developing in the first place,” John explained, “so Neighbourhood Houses are in a powerful position to spread the word to the people that matter.”

Where to find Jack

Visit www.knowyourodds.net.au to see the blog and view the TV commercials, and to click on the 'Like' banner to connect with Jack on Facebook.

Where to find Gamblers Help

Phone line 24/7: 1800 858 858

Online: www.gamblighelponline.org.au

Face to Face: 1800 243 232 (Anglicare), 1300 364 277 (Relationships Australia)



Sharing Snapshots from around the Houses

St Helens Neighbourhood House: We've just heard that we were successful in obtaining a \$7000 grant to upgrade out kitchen in the Bungalow. The existing kitchen looks like it was built in the 1970's and it's ready for an upgrade. This means we won't have to carry hot food etc. from another area for our Eating With Friends Groups and we can wash the dishes on site, instead of carting dirty dishes for miles. It also means that the Bungalow can be used by a greater variety of community groups. Thanks to the Tasmanian Community Fund. Eleanor Taylor—Coordinator.



Tresca Community Centre: Good news for Tresca being funded \$57,778 for the erection of a new Men's Shed through Tasmanian Community Fund. We have been working for over 5 years to get funding for this project and are therefore very excited that we have been able to achieve this fantastic result. Many thanks to TCF and our supporters....Woohoo...I'm still dancing round the hallways with a huge and silly grin on my face....The blokes have been more 'controlled' they just want to get the new shed up and running. But for us patience will be the name of the game as being council owned we have a multitude of hoops to jump through...but we will do it!!! This can only be described as the best Christmas present ever!

And... We had just had a phone call this morning from Cadbury's, we're getting a small donation of chocolates for our volunteers. Will be sharing it with them at our function for volunteer recognition/Christmas party!!! Yum! Rhonda Legg—Coordinator

Warrane Mornington Neighbourhood Centre: Warrane/Mornington was successful with a TCF grant this round to build a garage for our community bus which operates in partnership with Risdon Vale Neighbourhood Centre and SAPRA (South Arm Peninsula Residents Association) which will be built on the grounds of Warrane Primary School. Leanne Doherty—Coordinator.



Devonport Community Centre: Devonport Community House held an event for Rural Health Week which saw close to 500 people attend a school event and a community event. Our school event had four local and rural schools attend the garden for three activities relating to healthy eating and being active. The Community part of the day consisted of entertainment including Nigel Squibb on healthy cooking/eating, DJ Dom for live music, jumping castle, face painting and much more. There was a large range of fresh produce from the garden including plants and 20 local service providers who also talked with and provided health being information to the public in attendance. Kate Beer—Coordinator.

Goodwood Community Centre: Goodwood Community Centre has been successful in applying for Tasmanian Community Fund funding to continue to support the Northern Suburbs Learner Driver Mentor Program, Greenlight. The funding will see the project continue for the next three years. Greenlight links individuals living in the Northern suburbs who wish to obtain their driving license who do not have access to a car or someone to teach them, with a volunteer mentor driver and a program vehicle. The program is in high demand and in many cases not only benefits the individuals who gain their licence, but enables their wider network of family and friends access to employment and training opportunities





Sharing Snapshots from around the Houses

along with increased access to support services.
Rachael French—Coordinator

Deloraine House: We received TCF funding towards the cost of a playground that our local PYPS group identified as a need. We have been able to get funding from 3 sources for this – ANZ Seeds of Renewal & Bendigo Bank are the other two plus fundraising by the mums & smaller amounts from Meander Valley Health Services & Variety Tasmania. The Hospital donated the land, council are doing all the work to have it installed, the mums did all the research to decide what they wanted. Many of them are also using this experience to count towards study they are doing as well. All round, very empowering for them!

Ros Albiston—Coordinator



Okines Community House :
Cob Wall Workshop –Sorell Council Grant (\$1,000)

Learning how to build a cob wall using natural building methods facilitated by a local builder/artist. The mandala garden will be used for crop rotation and will become a rejuvenating, thriving feature of our Garden space. Twenty seven (27) people (young and old)

attended the workshop getting their hands and feet covered in mud and the wall was constructed before lunch time. It was a wonderful mornings work of water carrying, mixing mud, clay and straw and building one giant mud pie as we learnt a very ancient building technique.

Greenhouse – Community Support Levy (\$2,806.25)

This funding is to purchase a greenhouse for the



Okines Community Garden site. The purchase of a greenhouse will provide:

- A space for the target group to have access to a fresh vegetable supply as well as opportunities to learn growing and cooking techniques
- Positive health outcomes
- Improved control over the environment, pest control, regulation of temperature, humidity and water distribution and the ability to extend the growing season which will enable greater opportunities for participation

The greenhouse will be installed early in the New Year.

IT Training Facilities and Workshops - RRR Seeds of Renewal (\$6,111)

To purchase equipment, including 6 lap top computers, to provide ongoing training courses to our community members. Nat Siggins—Coordinator

Risdon Vale Neighbourhood Centre: Ten hire bikes from Maria Island are being re-birthed and will go to good homes as part of a community bikes project at Risdon Vale.

Maria Island ranger Chris Howard said the 10 bikes were recently decommissioned and replaced with new models after being considered to be beyond economical repair. "We heard about the Risdon Vale Neighbourhood Centre's Bike Program which repairs secondhand bikes and gives them to local families and we thought this would be a great use of the bikes," Chris said.

The bike project is a partnership between Geilston Bay High School, Risdon Vale Primary School and Third Place Communities.

The bikes will be part of about 150 bikes, along with new helmets that will be given away to families and schools in need, just in time for Christmas.

Chris expressed his gratitude to Walkers Transport of Orford, which generously agreed to transport the bikes from Orford to Risdon Vale at no cost.

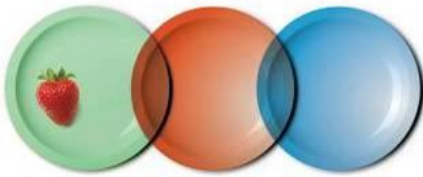
Bikes have been available for hire on Maria Island for about three years and it's an increasingly popular activity on the island. Its appeal is that there are no vehicles, other than the odd park management vehicle, to contend with, and with the roads are in better shape than ever, thanks to the recently completed road works that were part of flood repairs.

"Visitors can cycle from Darlington to Encampment Cove and return as a day ride. It's a great way to see the island and the bike hire is only \$20 per day," Chris said.

Ann Harrison—Coordinator



Eating With Friends Project



Eating With Friends

The success of Eating With Friends groups relies significantly on the efforts and commitment of the volunteers who support and run EWF

meals. As a way of recognising people's efforts and saying thank you, the EWF Project Steering Committee decided to again host lunches for the volunteers and organisers of EWF groups.

The lunches were held in October, and a wonderful time was had by all who attended.

On October 25th twenty-nine people sat down to lunch at Sails Restaurant in Bellerive, on the deck overlooking Kangaroo Bay, on a perfect spring day. Conversation filled the air as everyone kicked back and enjoyed a leisurely lunch, able to relax and take time out to converse with people that they are usually too busy working with to have time to chat.

Groups represented were Kingston, Clarence, West Moonah Golden Years Club, Claremont /Austins Ferry, Primrose Sands and West Moonah Community House, as well as EWF Steering Committee and TACH representatives.

On October 27th sixteen people gathered at the LEVEE FOOD Co in Launceston. Again the sun shone and we enjoyed beautiful food and great company while overlooking the Esk River.



Groups represented were Beaconsfield, Dorset and Deloraine, as well as EWF Steering Committee and TACH representatives.

The photos included here are from those lunches. The EWF Steering Committee is sadly losing 2 long-standing members.

Julie Williams, from the Community Nutrition Unit, DHHS has been involved with the Steering Committee since the very beginning of EWF 11 years ago.

Kim Lethbridge was the Coordinator at West Moonah Community House when the EWF pilot was hosted there in 2000 by the WMCH volunteer program. Kim has been the TACH representative for the past 6 years.

We wish them both well in their new endeavours.



EWF meals bring a lot of joy to those who attend - and it wouldn't happen without you all! Thank you to all the Houses in the TACH network that host an EWF meal.

Wishing everyone a joyful time in the run up to Christmas.
Cheers

Karen
Eating With Friends Project
Coordinator



ASU welcomes PM's new Equal Pay commitment



A•S•U

Article provided by the Australian Services Union.

The ASU and the Federal Government have reached agreement on the ASU claim for Equal Pay.

After weeks of discussions in conciliation and with the assistance of Fair Work Australia, the Federal Government has agreed to fully support the ASU claim for Equal Pay. *The Government will now support the ASU claim that SACS workers be paid the same rates of pay that were awarded by the Queensland Industrial Relations Commission in 2009.*

If Fair Work Australia agrees with the joint position of the Federal Government and the ASU, every SACS worker in Australia will receive a significant pay increase and we will have achieved, after a 30 year struggle, one single pay scale for every SACS worker in Australia.

We are still being opposed by some employers and governments, so Fair Work Australia (FWA) will need to make a decision. The details of the agreement and how it will be implemented over the next 12 months are detailed below.

Details of the Agreement between the ASU and the Commonwealth Government

The Australian government supports the ASU claim for equal pay and the establishment of a national rate of pay for SACS workers.

These rates of pay will be (with CPI increases) the rates awarded by the Queensland Industrial Relations Commission in May 2009. The rates will be phased in over 6 years with those receiving the smallest increases getting them in a shorter time period.

In the first part of 2012 the Government will fund an industry assistance package to help employers and employees understand the new arrangements. All staff will also receive a pay increase via FWA on July 1st 2012. Following this pay increase workers will translate to the new Modern Award classification structure and then be "Equal Pay Ready."

All staff will then receive the first additional increase arising from being "Equal Pay Ready" on December 1st 2012. In addition all staff will receive a further increase on 1st July each year arising out of the National Wage Review.

FWA must still make a final Decision

A number of parties are still opposed to our claim for Equal Pay.

These include: *Victorian government, AIG, AFEI, and ABI (the employer organisations).*

As these parties are still opposed to our claim and they all say that community service workers should get no increase at all, a final decision in our case must therefore be made by Fair Work Australia.

The position of the Tasmanian Government is still ambiguous.

Premier Lara Giddings has stated that the Tasmanian Government supports equal pay but has stopped short of committing to funding any pay rises that may result in a favourable outcome. ASU members are now calling upon her to come on board and to take an active role to support equal pay for Tasmanian workers.

These workers provide services on behalf of the Tasmanian government. They provide homeless people with a place to stay, they provide support to those with disabilities, they give families in crisis a place to turn to and play a vital role in the child protection system. They are now asking for their State government to step up and support them and finally get the recognition and financial restitution they clearly deserve

The final dates of our hearings are the 28th of November and the 7th & 8th of December.

Only Union members will have the key that opens the door to Equal Pay – Union membership.

The ASU will be working to provide Union members with the tools they need to be sure that they get the full benefits of Equal Pay.

Every Tasmanian SACS workers will have to be re-classified under the new Modern Award structure in early 2012.

ASU members will have access to a full range of resources to ensure that they are properly translated to the new structures and the correct rates of pay.

This key will NOT be available to non-union members. Non-union members can join the ASU today and become "Equal Pay Ready".





Farewell from Kim

Sadly, this newsletter will herald the end of an era for me. After 7 years as Development Assistant / Officer with TACH and previous to that, ten years with West Moonah Community House, I've made the incredibly difficult decision to move on.

My involvement with Houses began as I'm sure so many others have – young stay at home mum, screaming baby, two other children in tow—with encouragement from a friend went along to playgroup at the local Community House. What a revelation! At that playgroup, I found adult company, people who understood what I was going through as a parent, peace and quiet for a few minutes when a lovely lady took my screaming child out to the sandpit while I had a cup of coffee and the chance to really play with my children through the activities that were offered that day. I was hooked. One day a week at playgroup became two and before long, with the encouragement of the current Playgroup Leader, I'd taken on a small leadership role myself and was relishing the challenge of finding and preparing new activities each week. I had also made a wide circle of new friends who I had begun catching up with outside of playgroup, who were opening up a huge and whole new world to me and who are still my dear friends to this day.

My involvement grew along with my confidence. To cut a long, long story short, I eventually joined the Management Committee, became Secretary and was very excited to apply for and be appointed as House Coordinator a few years later. It sounds like a cliché, but I felt like someone had given me wings and taught me how to fly.

I loved being a Coordinator and felt like I'd found a niche. It was a role I relished for five years. I loved working with our community to develop programmes and activities and I enjoyed the friendship and support of a fabulous team of people. It was also a real joy to be able to watch others embark on similar journeys to my own – gaining confidence, getting involved or even going on to further education or



paid work.

After five years, I was really tired and I made the sad decision to say goodbye to my friends at West Moonah and move on. Surprisingly to me, this turned out to be a really traumatic event and it took me nearly a year to come to terms with the loss of the House from my life. I guess, it wasn't until I left that I realised that my work with Houses felt unfinished, that I still had more to offer. With this in mind, after a year off, I spied an advertisement for the newly created position of Development Assistant with TACH, working alongside the Executive Officer to provide support for Houses and providing administrative support for the organisation.

And the rest, as they say (seven years later), is history.

The past seven years have been such a joy. My work here at TACH has included much for me to be personally proud of including my own attainment of qualifications and my work on a few projects, such as the compilation of the first Management Committee Handbook and the development of the new TACH website, where I took a lead role. But, I look back over the past seven years with a real sense of pride in the achievements of our members and the small part that we've played in that.

There are so many things but some of the standouts have been; sharing the joy of receiving full time funding after twenty committed years of lobbying by Houses was incredible and again, this past year we saw the Houses work together to successfully lobby for an increase in funding. These were moments of total pride and excitement – particularly that the Government had recognised the vital work of Houses by providing these increases.

I remember with awe how we felt when we successfully applied for the Everyday Literacy



Farewell from Kim



funding through the Tasmanian Community Fund. Two million dollars? Wow! Yet another amazing acknowledgement of the work of Houses.

Seeing the Eating With Friends programme become funded and expand across the Houses and the State. I was involved in a minor way with the pilot for EWF back in 2000 and been involved

on and off ever since. I have loved watching the program grow to the point where we are now often approached by other States to see how we do it here.

I have been involved in seven Conferences held around the State which has enabled me to work with the fantastic people around the TACH regions to bring all manner of professional development and fun opportunities to our members. The beauty of these Conferences to me always lies in their ability to bring our volunteers, staff and committees together and to watch them network and share and enthuse others so that they go away inspired and brimming with new ideas. This, for me, is the true worth of Conference – although House Idol has created some very special memories, along with John in fishnet stockings at the last one which will be burnt on my retinas for many years to come!

I have loved being able to send out a request or watch how a House might email a question out to the network or throw out a query at a Regional Meeting and be inundated with ideas, templates or offers of help. I don't think there are many organisations or networks that would be this generous with their time, expertise and knowledge and I'm grateful and proud to have been a part of that.

A true highlight has been hearing the stories that never cease to amaze me. I have never tired of hearing about the inspiring projects or the differences made in people's lives as a result of becoming involved in a Neighbourhood House. I am constantly surprised, excited and in awe of the commitment, ideas and breadth of activities, projects and support being offered, and to hear of the people who give so selflessly and often without recognition – their reward

being the opportunity to make a change, offer a service or enable a better deal for their communities.

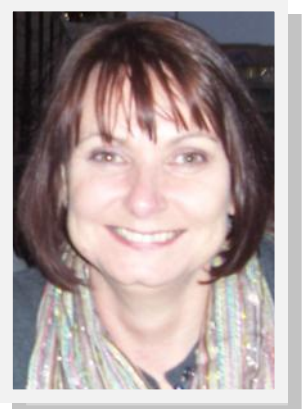
I can never thank enough the people who I have worked with here at TACH. At first Glynis Flower and then John Hooper, our Executive Officers, who have been mentors and inspirations to me as well as some of my biggest supporters and wonderful friends. I have loved working with the fabulous Pam Bridgen, who has taught me some pretty nifty financial tricks along with the joys of date scones for morning tea, and whose friendship has made TACH an amazing place for me to work over the years. To the rest of my TACH Team family – Karen, Leah and Ron – thanks for sharing so many scones with Pam and I and your expertise, stories, support and friendship too.

To our Board Members over the years, you have regularly changed, but your support has always been solid and I thank you for being there – particularly Ann Harrison, Doreen McDonald and Simon Paul – the three TACH Presidents in office during my time here - you have all been particularly great at advising, listening and supporting. Huge thanks to the volunteers who have assisted me with projects, events and helping out in our office along with the DHHS staff and the other organisations I've had the opportunity to work with along the way.

Most of all I'd like to thank the network for your support, love and care. I am a true product of the Neighbourhood House system. I would not be where I am today without your friendship, understanding and patience over the past seven years at TACH and 18 years within the network. I've come a long way from that person who thought I was "just a mum" and had nothing much to offer.

I'm looking forward to new challenges in the years to come, which will hopefully include some study and new opportunities. Wherever I end up, I will always be singing the praises of Neighbourhood Houses from the rooftops at every available opportunity and I will be making sure that our paths cross often.

Cheers for now,
Kim



Rokeby's Badminton Bandit

We recently had the Rokeby Neighbourhood Centre repainted on the outside and the contractor that painted the building brought along his two year old border collie dog, named Fergus, which is very cute with black and white patches over its back and a virtually white face with a bit of black around his right eye. All the dog is interested in is to chase objects around the park.

On the Monday the painter was at the back of the building spray painting and he had to use the power points in the gym which left the door ajar whilst Fergus played in the park chasing balls, sticks, and whatever else he could get his mouth around.

The badminton people came in around 12pm for their usual tournament of badminton and proceeded downstairs to play their games while I stayed in my office doing the usual day to day work for the Centre.

At 1.30pm the painter came inside to our kitchen to grab a coffee which I thought nothing of it as he usually makes himself at home here whilst he is painting the building and after his coffee he snuck downstairs to use the entrance in the gym to get to his truck and painting gear.

AT 1.50pm I had three badminton ladies approach me with a complaint quite upset. It seems that they were having a very intense game of badminton when all of a sudden a big black dog ran into the gym jumped up into the air, took the shuttle cock and ran out into the park with two ladies chasing the dog around the park trying to get their shuttle cock back.

When they finally caught up with Fergus he was lying in the middle of the park having a lovely chew on the shuttle cock. As they were telling me this, one the ladies that was chasing the dog brought in this half chewed slobbery remains of a shuttle cock to prove that the dog was the culprit.

It was extremely hard for me to keep a straight face and with all that said the Centre had to fork out a new shuttle cock for the badminton class and a tennis ball for Fergus so he would not disturb the ladies again.

Anthony Stoyles—Rokeby
Neighbourhood Centre Coordinator

Sharing Stories

DEBBIE'S STORY

I first came in contact with Northern Suburbs Community Centre in 1995 when my daughter was still a toddler. At the time I was living in Mayfield and did not know anybody else with children. I was very lonely & isolated and when my parents went away on a 6 month trip I knew I needed to do something.



A NSCC newsletter would appear in my letterbox and after much nail biting I took the plunge and enrolled in a course that was held at Mowbray for 10 weeks. By the end of the program I was enrolled in another course, had signed my daughter up for Take a Break childcare (she really needed a break!!), I was making friends and becoming a part of a community.

I joined the NSCC management committee and was secretary till I left in 1998 and moved away.

In 1999 I had a son!

In 2000 my partner and I started a small business, an oyster farm on Bruny Island & a processing plant. Lots of sharp learning curves and scary 'I am not cut out for this' moments in those early days.

We stopped the processing side and unfortunately our partnership ended. I continued with the farm (we also had another business partner)

I also started doing food festivals by myself. The food festivals have probably been one of the biggest achievements of my life, apart from my 2 beautiful kids of course. I am proud to say I am at year 6 of selling oysters at Festivale

Never in 1995 would I have believed myself capable of applying for, setting up and managing such a thing.

I went to Polytechnic (TAFE) in 2009. The first assignment I received for customer service I thought 'No way can I do this, what have I got myself in for?' One step at a time I finished with a Cert 4 in Marketing and have one subject to go to complete a Cert 4 in Business.

I was so lucky to get a job as a Small Business Consultant at Business and Employment. Again I was surprised myself when I was chosen for this position. In my interview I was asked about my connection to the Neighbourhood House from 1998!

I am fortunate that I am paid to help people achieve their goals and the service is free! I love having a job where you don't have to ask people for money! So if you want to start a little business or you already have one come and see me!

If I hadn't attended Northern Suburbs Community Centre all those years ago I am sure I would not be where I am now but I also believe in taking a chance because it is amazing how often you achieve great things & it is never bad as you think!



Sponsored by:

AISIN

One Team, Best Future

**WIN Toyota
Sewing
Machines**

2012 TACH Community Spirit Challenge



**2011 Community
Spirit Challenge
Winners:**
**Most Creative—
Derwent Valley
Community House
(left)**
**Open—Devonport
Community House
(right)**



What is it about?

Show your Community Spirit, submit your entry in the 2012 TACH Community Spirit Challenge. Winners announced during Neighbourhood House Week in May 2012. Capturing the spirit of your community will account for 50% of the judging so you do not have to be a sewing expert.

Think about all the groups that could contribute to your entry and make this a real community effort from your Centre. Some of the groups that could be involved are friendship groups, playgroups, projects or programs, quilting or craft.

What are the prizes?

Aisin Australia has kindly donated:

OPEN WALL HANGING - a Toyota Sewing Machine valued at \$499.00

MOST CREATIVE WALL HANGING- a Toyota Sewing Machine valued at \$499.00

Conditions of entry

- Open to TACH members.
- Must predominately be made using fabrics on a sewing machine.
- Hangings must be approximately 1metre x 1 metre.
- Must be own work and not submitted previously.
- TACH Office is to be advised in advance of the Centre's intention of submitting an entry.
- Competition closes 27th April 2012, all entries to be received at TACH Office by this date.

TACH BOARD 2011—2012



President: **Simon Paul**
Clarendon Vale
Neighbourhood
Centre (S)



*Vice
President
& Public
Officer:* **Kate Beer**
Devonport
Community
House (NW)



Secretary: **Rachael Morris**
Ulverstone
Community
House (NW)



Treasurer: **Leanne
Doherty**
Warrane Morn-
ington Neigh-
bourhood Centre
(S)



*Board
Members:* **Michelle
Anderson**
Northern
Suburbs
Community
Centre (N)



Therese Page
Beaconsfield
Community
Centre (N)



Eleanor Taylor
St Helens
Neighbourhood
House (N)



Joanne Ring
Devonport
Community
Centre (NW)



Suzi Edwards
Pittwater
Community
Centre (S)



Eddie Rodgers
Maranoa
Heights Commu-
nity Centre (S)

Resources

<http://www.youtube.com/watch?v=g4b56ky6118>— This video illustrates a 5 question door-to-door survey that you can ask neighbours. This tool helps people in neighbourhoods connect with each other, and also helps to define a neighbourhood community vision from the residents themselves.

<http://www.youtube.com/watch?v=sqo84EW4adl&feature=related>—The underpinning community development principles as seen through examples from the Community Mobilisers in Milton Keynes, UK.

<http://www.lcsansw.org.au/resources/lcsa>—LCSA (Local Community Services Association NSW) have prepared some handy guides around using consultants and on building your association's membership. Check out their links to some excellent video resources.

<http://www.youtube.com/watch?v=uMq-YwC0azg>—A video entitled "Neighbourhood Houses—the heart of our community", which illustrates the Neighbourhood House programme in Vancouver, Canada.



Friends of TACH

We are delighted to recognise the following individuals & organisations as Friends of TACH.

The Hon Dick Adams MP

Geoff Lyons MHR

Elise Archer MP

The Hon Nick McKim MP

Scott Bacon MP

Senator Christine Milne

Senator Carol Brown

NILS Network of Tasmania

Senator David Bushby

The Hon David O'Byrne MP

Senator Richard Colbeck

The Hon Cassy O'Connor MP

Julie Collins MP

Jacque Petrusma MP

The Hon Craig Farrell MLC

Senator Helen Polley

The Hon Ruth Forrest MLC

The Hon Tania Rattray MP

The Hon Mike Gaffney MP

Senator Lisa Singh

The Hon Lara Giddings MP

The Hon Sue Smith MLC

Hon Vanessa Goodwin MLC

Senator Anne Urquhart

The Hon Bryan Green MP

Rebecca White MP

Mr Daniel Hulme

The Hon Brian Wightman MP

Friends receive a copy of our quarterly newsletter ATTACH and information about our forthcoming events and activities. Contact TACH on 6228 6515 if you'd like to become a Friend for \$33 pa (GST inc).